

Cambrian 16mm Scale Parts & Accessories

Components are injection moulded in polystyrene
(except C/E/L prefix items), with some metal parts where appropriate.
Prices include VAT at 17½%

We do not take credit cards, except using Paypal on our website

ORDERING —

Postage — please add:

£2.00 per order up to £10.00 } * **BUT SEE BELOW**
£2.50 per order up to £20.00 }
£3.00 over £20.00 }

A REDUCED postage rate of £1.50 can be added if your order is for no more than any TWO items - from ref. nos. NA1 - NA34, but excluding NA8, NA11, NA12, NA18/9, NA21 and NA27.

* the £3.00 postage rate applies to any value order,
if your order includes any of the following:

E15 / E30 / E31 / E35 Battery boxes, CA2 / CA17 motors, NA18 / NA19 boxes, Bogies and assembled Speed Controllers

as packets containing these items may incur a higher postage rate due to their thickness.

Please make your cheque payable to "Cambrian Models". Please allow 21 days for delivery (28 days for overseas orders).

**Cambrian Models,
10 Long Road,
Tydd Gote,
WISBECH,
PE13 5RB**

Tel. 01945 420511

(if there is no reply, please leave your number & we will call you back)

email: see email page on our website

We also make 4mm scale wagon kits — send £1.20 for a catalogue

cambrian

NARROW GAUGE

COMPONENTS



for 16mm Scale

2010

cambrianmodels.co.uk

BATTERY HOLDERS

E3 Battery Holder – 2 "AA" Batteries 80p
With PP3 studs

E6 Battery Holder – 2 "AAA" Batteries 80p
With solder tags

E11 Battery Box – 2 "AA" batteries £1.50
With lid & ready wired on/off slide switch, plus 150mm leads.
Ideal for coach lighting or locos etc. 65mm x 32mm x 18mm

E15 Battery Holder – 4 "AA" Batteries £1.00
Square with PP3 studs

E18 Battery Holder – 2 "AA" Batteries 70p
With red/black leads 150mm long

E19 Battery Holder – 3 "AA" Batteries £1.00
With solder tags

E20 Battery Holder – 1 "AA" Battery 60p
Use in series with holders above to add an extra battery, e.g. when using E3 LEDs & 3v motor on a loco, where available space prevents use of E19

E24 Battery Box – 4 "AA" batteries £1.75
With lid & ready wired on/off slide switch, plus 150mm leads.

E25 Battery Box – 3 "AA" batteries £1.65
with lid & ready wired on/off slide switch, plus 150mm leads.

E26 Battery Box – 4 "AA" Batteries £1.00
Oblong with PP3 studs

E28 Battery Box – 2 "AA" Batteries £1.00
With lid and 150mm leads (no switch)

E29 Battery Holder – 4 "AA" batteries £1.00
Flat type — batteries are side by side. Solder connection.

E30 Battery Holder – 6 "AA" batteries £1.20
Two layer type — three batteries side by side on each layer. PP3 studs

E31 Battery Holder – 1 PP3 9volt Battery £1.00
Clip fit holder with fixing holes and 150mm leads.

E32 Battery Box – 3 "AAA" batteries £1.50
With lid and switch. Use for white LEDs where space is limited

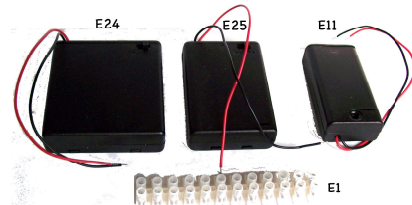
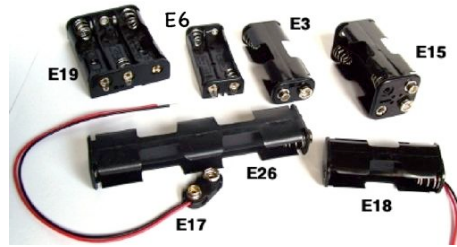
E33 Battery Box – 2 "AAA" batteries £1.30
With lid & ready wired on/off slide switch, plus 150mm leads.

E34 Battery Holder £1.30
Holder for eight "AAA" batteries with PP3 studs. Long type with two layers 2+2 cells. Gives 12 volts using 1.5v cells.

E35 Battery Holder 80p
Holder for two "C" batteries "side-by-side", with PP3 studs.

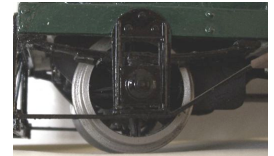
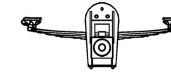
E36 Battery Box £1.50
For three "AAA" batteries with lid & 150mm leads (no switch).

Illustrated Leaflet on using LEDs in the garden 50p
— send an SAE + 50p if you just want this leaflet.



NA22 "Sandy River" Axleguards £2.85

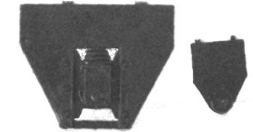
Set of 4 "inside sprung" based on those fitted to the Sandy River(US) railcars converted from road vehicles — see NA20 for radiator and NA29/30 for headlights and cowcatcher.



NA26 Simplex Loco Axleguards £2.60

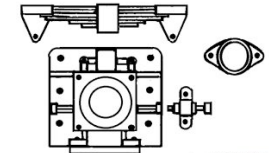
Set of 4 as fitted to 8/12hp locos. Also includes bracket for skid bar.

Could also be used for small wagons.



NA27 "Fowler" Axleboxes £2.85

Set of 4 axleboxes, plus springs, "chain tensioners" and small flanged "boss". Baseplate is approx. 21mm wide x 19mm high



NA28 GVT Coach Axleguards £2.85

Set of four axleguards



NA34 Simplex "Axleguards" £2.85

Set of four, as fitted to plate-framed locos. Axlebox & spring with hangers. Could also be fitted to other outside framed locos.



BRAKEGEAR

NA9 Set of 4 Brakeshoes £1.50

Brakeshoes & Hangers for four shoe brakegear - use two sets for 8 shoe type. Based on W & L type - 24 - 30mm wheels.



NA10 Glyn Valley type Brakegear £2.30

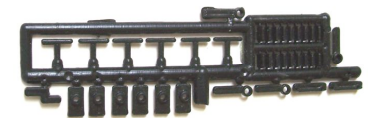
Set of 4 shoes & push rods as fitted to GVT coaches (non-working). For 5ft. 6in. wheelbase (88mm) and 24 - 26mm wheels. Picture shows centre bar still attached to moulding.



FITTINGS

NA3 Tallylyn-type Coach Door Handles £1.75

For 12 doors, with dummy hinges. Also includes parts to make working hinges/ catches for inwards opening guard's doors. (Two mouldings per pack)



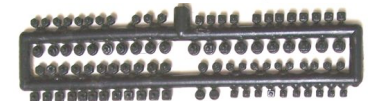
NA4 Hooks & eyes for safety chains £1.75

8 hooks & eyes, 4 larger hooks & 2 hooks for 3-link couplings. (Two mouldings per pack)



NA5 Nuts & Bolts £1.50

Add the finishing touch with these. Approx. 180, selection of three sizes. (Two mouldings per pack)



NA6 Brake Handwheels etc. £1.50

2 brake wheels, 3 round & 4 curly valvewheels, plus 2 sizes of pressure gauges. Smokebox door handle & loco regulator



NOTE: None of the following items is suitable for mains use. Only for use with batteries (max. 12 volts), or a suitable mains adaptor supplying a maximum of 12 volts DC, available from Argos or Maplin Electronics. Do NOT use the adaptor in the garden - take only the low voltage lead outside.

N.B. The adaptors sold with Christmas Bulb/LED lights may supply AC not DC, and the LEDs will flash as the diodes that rectify the AC to DC may be in the "multi-function" box, not the plug-in adaptor.

LEDS & Holders

—With suggested wiring diagram & series resistor (not required for L9)

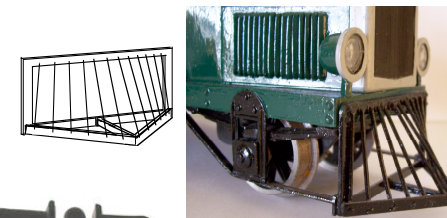
- L1 5mm Superbright Yellow LED 60p**
suitable for use in NA14 Headlight, NS2 Signal, etc.
- L2 5mm Superbright Red LED for tail lights 65p**
- L3 5mm Red/Yellow LED 70p**
for head/tail lights on Railcars & diesels - changes colour according to direction
- L4 8mm Yellow LED 65p**
suitable for coach/building lighting, etc. — e.g. one for small coaches, three for a medium bogie coach — gives an 'oil-light' effect
- L5 5mm Superbright Yellow LED 65p**
'Cloudy' type suitable for small coaches & street lights
The above LEDs will work from two AA rechargeable batteries. A series resistor is required (supplied). One set of batteries can be used per train & coaches connected using E5 or E27 plug & socket (can be also used to disconnect buildings from fixed wiring, when taken in for the winter).
- L6 5mm Very Bright "Yellow" LED 70p**
Orangey-yellow for interior lighting, 3-4.5 volts
- L7 5mm White LED 70p**
Bright "bluish-white", but lower priced than L10
- L8 5mm White "Power" LED £1.50**
5x brighter than L10 . These LEDs require 4.5 volts to work
- L9 5mm Flashing Yellow LED £1.00**
These LEDs require 4.5 - 12 volts to work (see E12 below)
- L10 5mm White LED £1.25**
These LEDs require 4.5 volts to work
- L11 5mm Flashing Yellow LED £1.00**
Brighter than L9. These LEDs require 4.5 volts to work
- L12 Square Very Bright Yellow LED £1.00**
Approx. 6mm 2 . These LEDs require 4.5 volts to work
- L13 Square Very Bright White LED £1.00**
Approx. 6mm 2 . These LEDs require 4.5 volts to work
- L14 3mm White LED 70p**
Suitable for NA29 Headlight etc. These LEDs require 4.5 volts to work
- L15 3.8mm Red/White LED 75p**
For head/tail lights - changes colour according to direction. 4.5 volts needed to work.
Do not use without a resistor or the red will no longer work
- L16 3mm Red LED 50p**
Suitable for working tail lights etc.
- L17 8mm White LED 80p**
Superbright diffused type

NA30 Cowcatcher £2.60

Requires assembly.

Plastic frame with wire for the "bars".

Size of back frame 48mm wide x 24mm high. As fitted to Sandy River Track Autos etc.



NA31 Coach end steps £1.50

Set of four, based on GVT type

NA32 Loco Brake Standard £1.50

With handle, top ring and square base.

Approx. 57mm high to top of handle boss.

NA33 Guard's Van Brake Standard £1.50

With wheel & round base, requires assembly

Approx. 56mm high to top of handle boss.



WHEELS

Plastic wheels, approx. 6mm thick, except NW1 which are 5mm, & 2mm deep flange.

NW1 15mm Disc with 4 holes £1.75

Set of 4. For 2mm axles.

NW3 24mm with six curly spokes £2.00

Set of 4. Used on slate wagons etc. For 2mm axles.

NW4 20mm Five spokes £1.75

Set of 4. Can be used with NB2 Bogies for making 4 wheel wagons. For 2mm axles.

NW5 25mm Disc £1.75

Set of four. For 4mm dia. axles

NW6 21mm Spoked Loco wheels £3.30

For Faller battery locos. Set of six for 2mm axles.

NW7 Wheel Set for "Excelsior" 0-4-2T £2.60

Set of 4 driving wheels & two trailing wheels.

19mm / 13mm dia. Drivers: 1/8" axle, pony 2mm.

NW8 Wheel set for Baguley 0-4-0 Petrol Loco £Later

Set of 4 wheels plus jack-shaft "flywheels". 24mm dia.

Drivers for 1/8" axle.

Drawings of the Baguley & "Excelsior" are in the "Kerry Tramway" book — Plateway Press.

NW9 30mm Spoked Wheels £2.60

Set of 4 wheels for 2mm axles.

Use with NA8 axleguards.

CA11 Pack of 10 Axles 90p

2mm dia. 75mm long.

CA12 1/8" Silver Steel 90p

160mm long for loco axles. Sufficient for 3 axles.

